

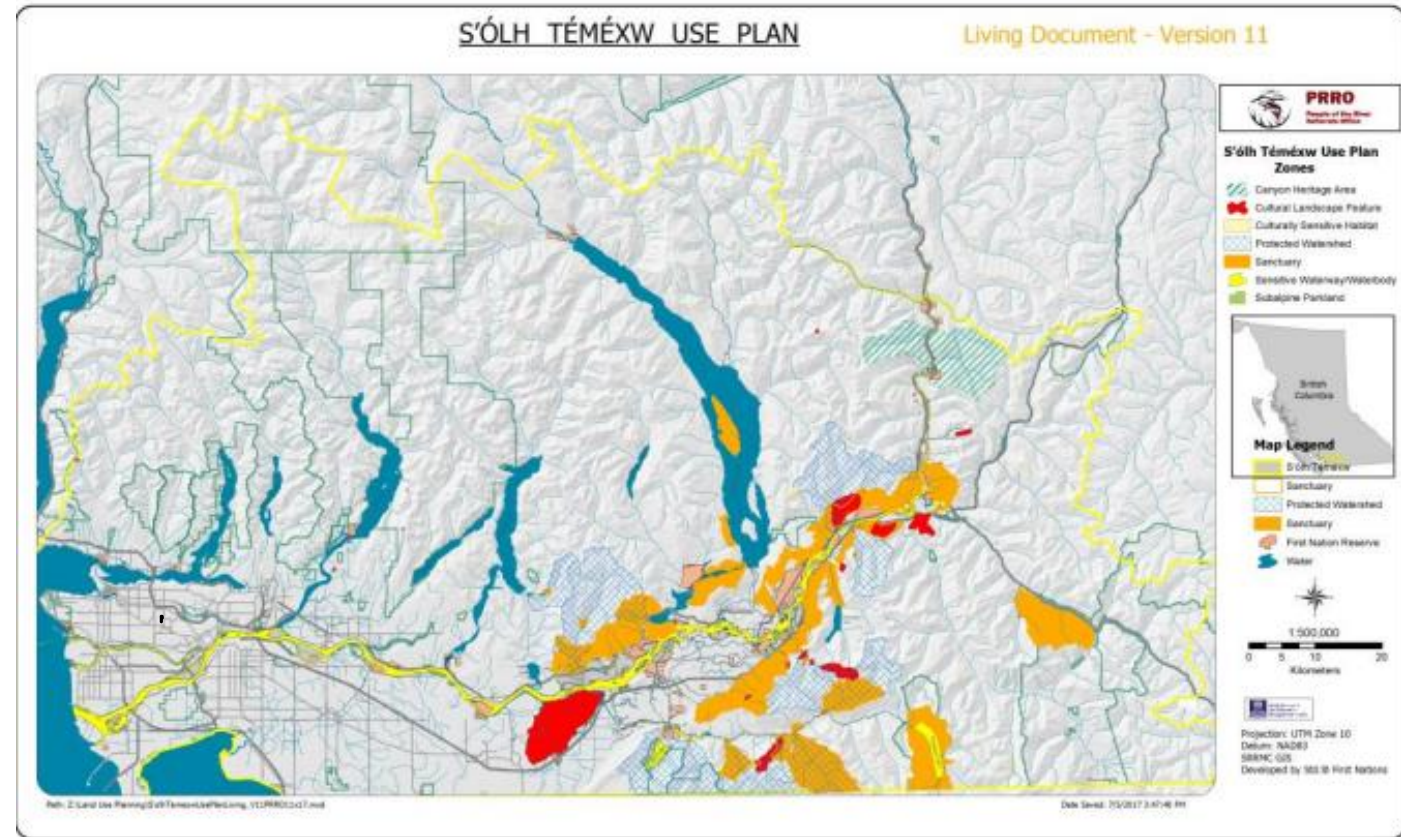
Biodiversity and Species at Risk Projects

Stó:lō Research and Resource
Management Centre (SRRMC)

The S'ólh Téméxw Stewardship Alliance (STSA):

The STSA guides engagement and consultation processes within S'ólh Téméxw (Our World; Our Land), Stó:lō traditional lands. The STSA is a collective of 17 First Nations who hold Indigenous rights and title within S'ólh Téméxw. (thetsa.ca)

- Chawathil First Nation
 - Cheam First Nation
 - Kwaw'Kwaw'Apilt First Nation
 - Scowlitz First Nation
 - Seabird Island Band
 - Shxw'ōwhámél First Nation
 - Sq'ewá:lxw (Skawahlook) First Nation
 - Skwah First Nation
 - Sumas First Nation
 - Yale First Nation
- Ts'elxwéyeqw Tribe as represented by:
- Aitchelitz Band
 - Shxwhá:y Village
 - Skowkale First Nation
 - Soowahlie First Nation
 - Squiala First Nation
 - Tzeachten First Nation
 - Yakwekwioose First Nation



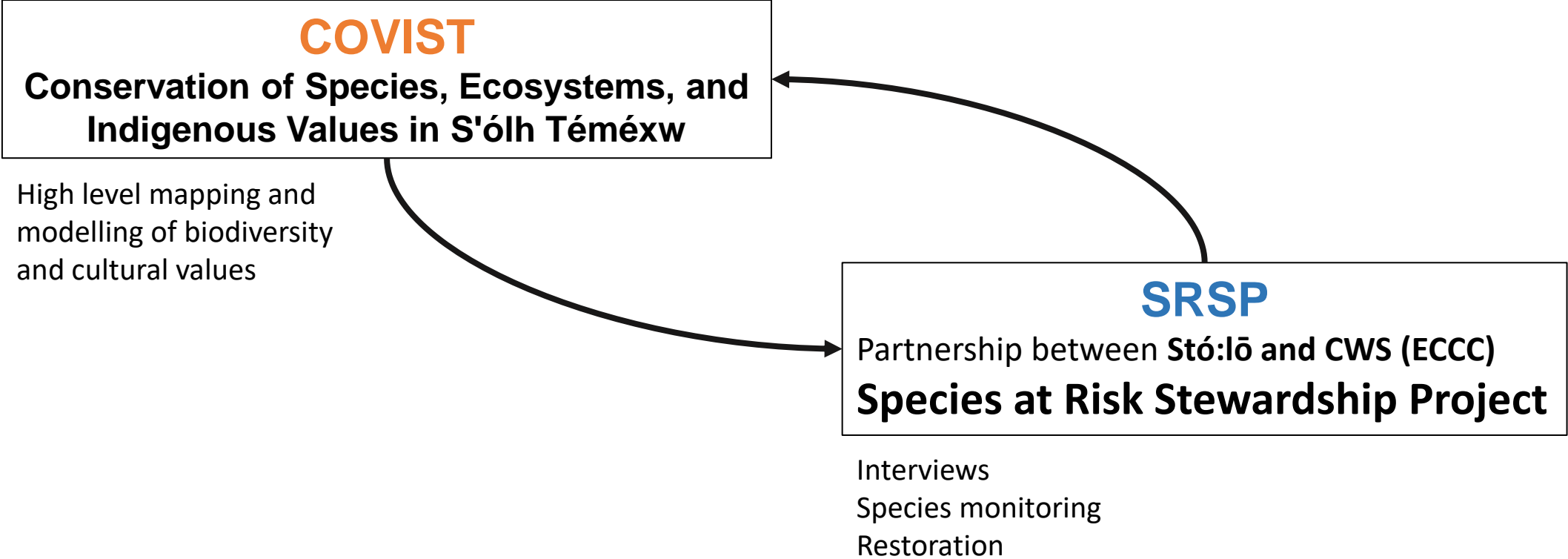
What is the Stó:lō Research and Resource Management Centre?

A group of professionals experienced working with Stó:lō people and experienced in:

- Archaeology
- Archives & Repository
- Cultural Events and Tours
- **Environmental Research**
- GIS Mapping
- **Environmental Monitoring**
- Halq'eméylem Preservation
- Referrals Support
- Community Projects



Taking an integrated approach



COVIST

Conservation of Species, Ecosystems, and Indigenous Values in S'ólh Téméxw



Coleads:

Josh Malt (WLRS)

Karen Brady (STSA)



Environment and
Climate Change Canada

Environnement et
Changement climatique Canada

STSA



S'ólh Téméxw Stewardship Alliance

Species at Risk Stewardship Project

Partnership between Stó:lō and CWS (ECCC)

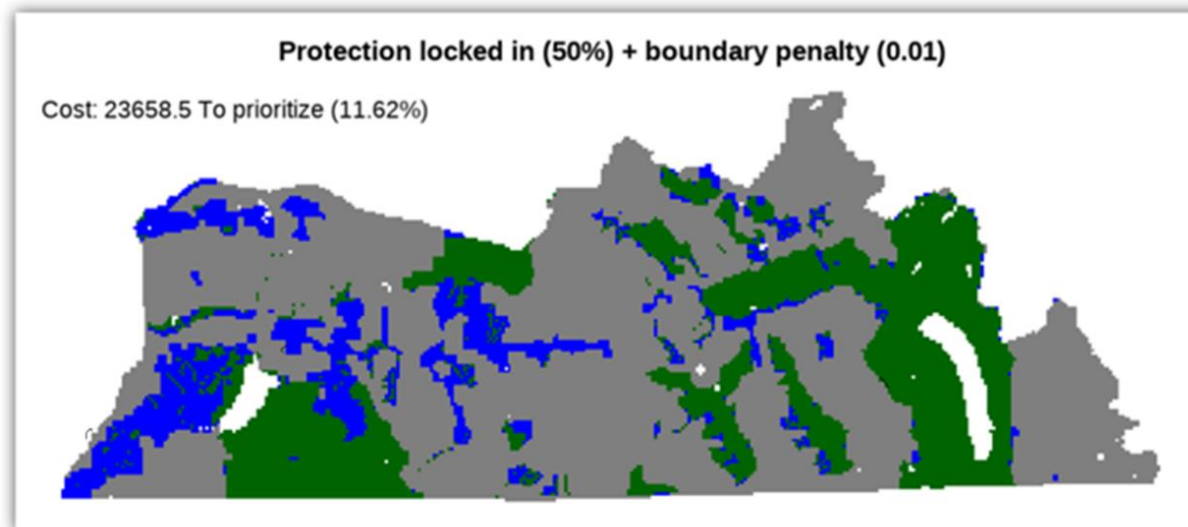


COVIST: High level, systematic mapping approach

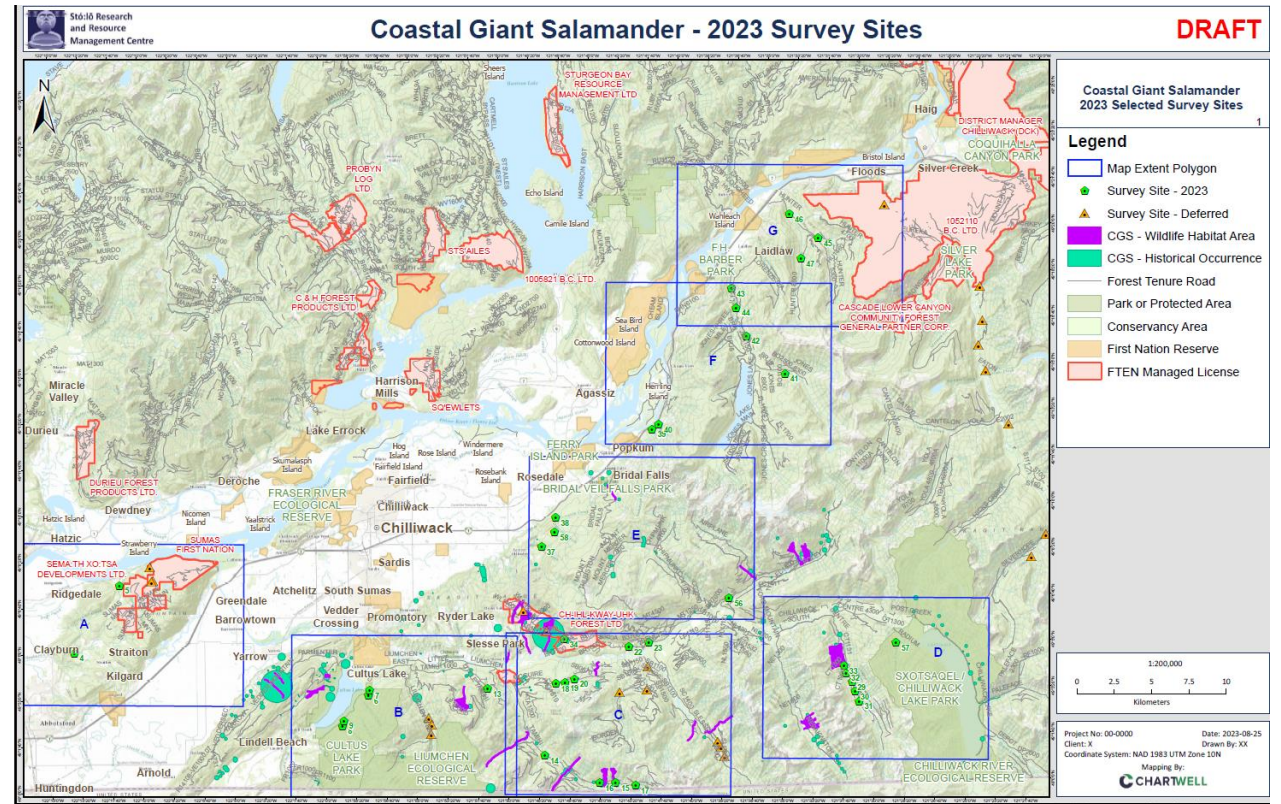
The **project goal** is the concurrent protection of the greatest number of *species at risk* and *Indigenous values* in S'ólh Téméxw.

Systematic Conservation Planning: "PrioritzR"

Identify Optimal Sites: Run PrioritzR analysis to identify sites that represent high overlap of SAR and cultural values.



SRSP: On-the-ground information gathering



Future plans...



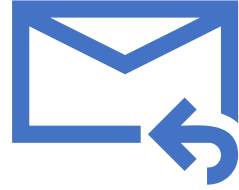
Target conservation and restoration areas using the PrioritizR model



Engage in interviews, dialogues, and community engagement sessions to learn more about culturally significant species at risk and cultural values



Refine our data and maps related to conservation of biodiversity



Thank you!

Jessica Lukawiecki

jessica.Lukawiecki@stolonation.bc.ca